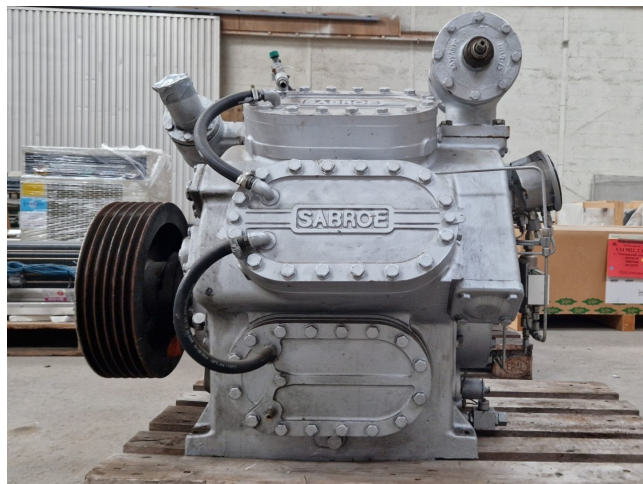


Sabroe SMC 108S HP

Specifications

| | |
|--------------------------|---|
| Brand | Sabroe |
| Type | SMC 108S HP |
| Refrigerant | NH 3 (ammonia) |
| Refrigerant type | R717 |
| kW at 0°C/+40°C | 391,0* |
| kW at -10°C/+40°C | 255,0* (-10 °C/+35 °C) |
| kW at -40°C/+40°C | 71,0 (-40 °C/-10 °C) |
| Pressure safety switches | ✓ |
| Hp/Lp/Op | |
| Pressure gauges | ✓ |
| Hp/Lp/Op | |
| Liquid line filter drier | ✓ |
| Sight Glass | ✓ |
| m3 / h | 353 |
| Remarks | Y.o.b. 1991 |
| Remarks | *Capacity based on the refrigerant type R717 at 1500 RPM. |
| Weight in kg. | 1595 kg |
| Sizes | 1100x950x950 mm (LxWxH) |
| Stock | 1 |



Description

Used Sabroe SMC 108S HP

Used Sabroe SMC 108S HP reciprocating compressor on NH3. Complete with a liquid line filter drier, pressure safety switches/gauges and sight glass. The compressor has a displacement of 353 m³/h at 1170 RPM. *Why choose for HOSBV? Were not only the largest used refrigeration specialist in Europe, but also, we deliver all equipment solely if it has passed our extensive quality test and after it has been cleaned industrially. *If requested we are happy to arrange your shipment.

